



CenterLine[®] 220

Compact GPS Guidance System

The compact CenterLine 220 is designed to let you profit from GPS lightbar guidance with any field operation. Inside the compact guidance system is a high-quality EGNOS GPS receiver and the guidance capabilities that make TeeJet Technologies leaders in lightbar guidance.



CenterLine 220 Features and Benefits:

- Versatile GPS guidance in a compact, portable package.
- LED Lightbar guidance plus a graphical display for complete guidance information.
- High-quality, 5 Hz internal GPS engine with external antenna.
- Simple setup gets you up and running in no time.
- Straight-line and curved AB guidance modes.
- Integrated look-ahead functionality anticipates vehicle's future position.
- Return-to-point feature.
- Durable, backlit keypad is easy to see in low-light conditions.
- Provides RADAR-like speed signal output for use with other control systems that require a ground speed signal.

Working Screen Layout

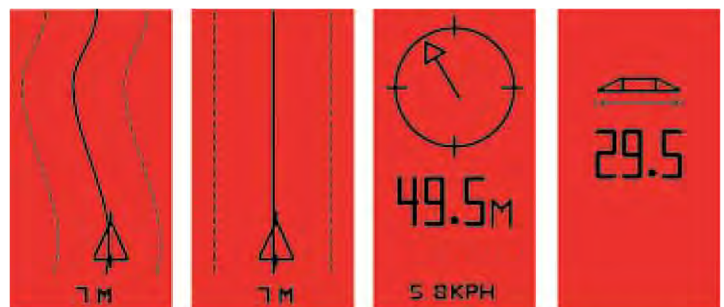
+10 Swath Number
 X-Track Direction
.9 X-Track Distance
8.5 KPH Speed
 You have a point stored for return-to-point.

Guidance Mode
 Straight
 Curved



NEW – Assisted Steering compatible when using FieldPilot 220 hardware

Screen Views



Map View
Curved AB

Map View
Straight AB

Compass View
Return-to-Point

Set Swath
Width Screen

How to Order

Part Number	Description
90-02401	CenterLine 220 Kit, Autonomous Metric Version
90-02402	CenterLine 220 Kit, EGNOS Version

ACCESSORIES

78-50155	Patch Antenna
90-02349	RAM Mount Kit for CenterLine 220
45-20042	Adapter Cable for TeeJet controls
45-05508	Speed Adapter Cable, Raven Controls
45-05478	Direct Battery Cable
198-669	Speed Adapter Cable, DIN/ISO 7 Poles
198-670	Speed Adapter Cable, LH-500, LH-6000, LH-85
198-675	Speed Adapter Cable, LH-5000



CenterLine 220 Kit Includes:

- CenterLine 220 Console
- Patch Antenna
- Cigarette Lighter Power Adapter
- RAM Mount Kit with Hardware
- User guide

Wiring Diagram

